



# CONZEALAND

## 78<sup>TH</sup> WORLD SCIENCE FICTION CONVENTION

TSB ARENA — SHED 6 — INTERCONTINENTAL HOTEL — MICHAEL FOWLER CENTRE

29 JULY - 2 AUGUST, 2020

# WELLINGTON NEW ZEALAND

Progress Report 0!

## MESSAGE FROM THE CHAIRS



Kia Ora (hello)! It's hard to believe we are finally a real Worldcon. Ever since Norman was attacked by flying cash in 2010, there has been an increasing number of fun-loving people mahi tahi (working together) on this bid. Tēnā koutou (thank you) to Kevin Roche and Worldcon 76 for hosting us, and tēnā koutou katoa (thank you all) to the fans who believe in Worldcon enough to vote in Site Selection.

We want to invite you to join us on this voyage of discovery (whakatōmene), as passengers or crew. As with any voyage, there is pukumahi (hard work), and the more people huihui (come together) for this goal of building the best Worldcon we can, the greater the result of the effort.

The Big Tent of Worldcon is a place where all fans can come together, enjoy their favourite activities, and introduce others to what it is they love. We invite you to join us in a theme of rauhi (gathering together to foster or protect) for our shared passion. We need very many volunteers to join us to crew this ship. Although we have many eager Kiwis, we need experience as well.

Please go to our website and sign up to volunteer for our crew. Haere (so long)!

**Norman Cates: Experience Chair**

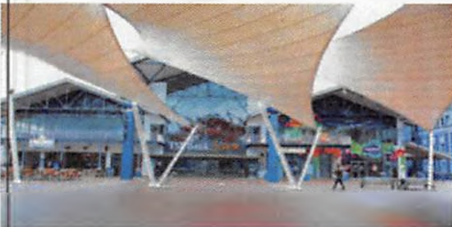
**Kelly Buehler: Business Chair**



## OUR TOASTMASTER - GEORGE R.R. MARTIN

GRRM sold his first story in 1976 and never looked back. If you have a Fevre Dream of playing Wild Cards with a dragon while discussing Songs of Ice and Fire you are dealing with someone who routinely handles a cast of over a thousand characters, dealing with major problems in tough, gritty worlds and doing it with style. Fortunately, this author, screenwriter, and television producer is a science fiction fan himself and will be lending his erudition and mad microphone skills to ConZealand as Toastmaster..

## OUR FACILITIES



### TSB BANK ARENA/ SHED 6

TSB Arena is the largest of Wellington's venues and Shed 6 is a 740<sup>2</sup>m space that separates into four meeting rooms. Joining the Arena and Shed 6 is a light-filled arcade great for socialising. The connectedness of TSB Arena and Shed 6 alongside the city's highly collaborative and compact nature makes it a great location for hosting a conference.



### INTERCONTINENTAL WELLINGTON

Adjacent to the waterfront in the heart of the central business district, the InterContinental boasts easily-accessible meeting spaces. With 232 superb guest rooms available ranging from stylish standard rooms to luxurious deluxe rooms and suites. The Club InterContinental rooms offer access to the world-class Club Lounge.



### MICHAEL FOWLER CENTRE

Wellington's main stage for leading performing artists and home to the New Zealand Symphony Orchestra, Michael Fowler Centre features a striking three-level glass facade and a beautiful interior featuring marble and native timbers. It's an easy stroll to hotels, culinary delights and quirky cafés, in the arts, culture and entertainment precinct.

## OUR HONOURED GUESTS

### MERCEDES LACKEY AND LARRY DIXON – AUTHOR GOHS

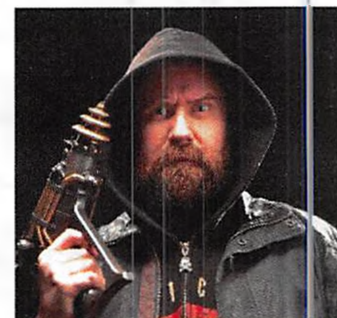


Think Creative and Fandom. Think Misty and Larry. Mercedes Lackey and Larry Dixon are storytellers PLUS! They bring you works that explore issues of ecology, social class, and gender roles. They “get involved”; you can talk to Larry and Misty about costuming, filking, board-gaming, role-playing, gaming, science, music, beadwork, sports cars, storm spotting, inclusive work environments, volunteer firefighting, raptor rehabilitation, pet parrot pampering and falconry. Misty and Larry still bring the latest news from Valdemar and other worlds, and Larry’s avian artist models provided texture mapping for the Weta digital model for Gwaihir and company. Next time you are in Wellington Airport look up and say “Hi” to “Nina”.

### GREG BROADMORE – NEW ZEALAND ARTIST GOH

Greg Broadmore is a concept designer, artist, writer and sculptor based in Wellington. He is the creator of Dr Grordbort’s, and has worked as a designer, artist and writer at Weta Workshop since 2002.

With Dr Grordborts, Greg’s vision was to “satirize pulp fiction that spans the era from the 1890s to the 1940s”. He has publicly self-identified as a friend to robots and is rumoured to have signed a secret pact with them regarding our eventual subjugation and enslavement.



### ROSE MITCHELL – FAN GOH



Rose commenced her fanac in the early nineties with Austrek, a Melbourne based Star Trek fan club and over the intervening years she has held a range of positions in various clubs or on convention committees. She chaired the Australian Natcon in 2002 and 2007 and was Fan Guest of Honour at the 2013 Australian Natcon. Her connections with NZ Fandom were reinforced when she was FFANZ Delegate in 2003. Rose headed up the Finance Division for the 1999 Worldcon and was Co-Chair of the 2010 Worldcon. In 2017 Rose was awarded the Peter McNamara Lifetime Achievement & Contribution to Science Fiction Award. Currently Rose is President of the Australian Science Fiction Foundation. She lives in Melbourne with no cats.

## CONVERSION PRICING

STATUS	BID SUPPORT STATUS	SUPPORTING	ADULT		YOUNG ADULT Born in or after 2000		CHILD Born in or after 2005		KID-IN-TOWN Born in or after 2015
VOTED IN SAN JOSÉ	Pre-support/ pre-oppose	Automatic	\$300 NZ	\$200 US	\$150 NZ	\$100 US			
	Tuatara	Automatic	\$300 NZ	\$200 US	\$150 NZ	\$100 US			
	Kiwi	Automatic	\$250 NZ	\$165 US	\$150 NZ	\$100 US			
	Silver Fern		Automatic						
	New Member	Automatic	\$300 NZ	\$200 US	\$150 NZ	US\$100			
DID NOT VOTE IN SAN JOSÉ	Pre-support/ pre-oppose	\$75 NZ \$50 US	\$370 NZ	\$250 US	\$225 NZ	\$150 US	\$105 NZ	\$70 US	No Charge
	Tuatara	\$75 NZ \$50 US	\$370 NZ	\$250 US	\$225 NZ	\$150 US	\$105 NZ	\$70 US	No Charge
	Kiwi	Automatic	\$320 NZ	\$215 US					
	Silver Fern	Automatic	\$150 NZ	\$100 US					
	New Member	\$75 NZ \$50 US	\$370 NZ	\$250 US	\$225 NZ	\$150 US	\$105 NZ	\$70 US	No Charge

US prices are provided as a courtesy. Our pricing is actually in NZ dollars and so pricing in other currencies will change as exchange rates fluctuate.

“World Science Fiction Society”, “WSFS”, “World Science Fiction Convention”, “Worldcon”, “NASFIC” “Hugo Award”, the Hugo Award Logo, and the distinctive design of the Hugo Award Trophy Rocket are service marks of the World Science Fiction Society, an unincorporated literary society.